



## THE WEAVE OF THE SHROUD OF TURIN



Charles Mader, Evelyn Campbell – Los Alamos, NM

# CARBON-14 DATES – Summer 1988



***ANYONE WHO  
THINKS THAT THE  
MAN OF THE  
SHROUD IS  
JESUS – IS A  
FLAT-EARTHER***

***IT IS JUST A  
MEDIEVAL  
FORGERY***



**Linen Wrappings of  
Egyptian mummies often  
give radiocarbon dates  
1000 years younger than  
that for the body which  
they cover.**

**Mummy #1770 – Manchester  
Collection – a 13 year old girl**

**Bones dated to 1510 BC  
Linen wrappings dated to 255 AD  
1750 YEARS DIFFERENCE**

# “Danny the Mummy”



Ibis bird sacred to the Egyptians were mummified as offering to Gods

Age of linen wrappings is about 550 years younger than the age of the bird.

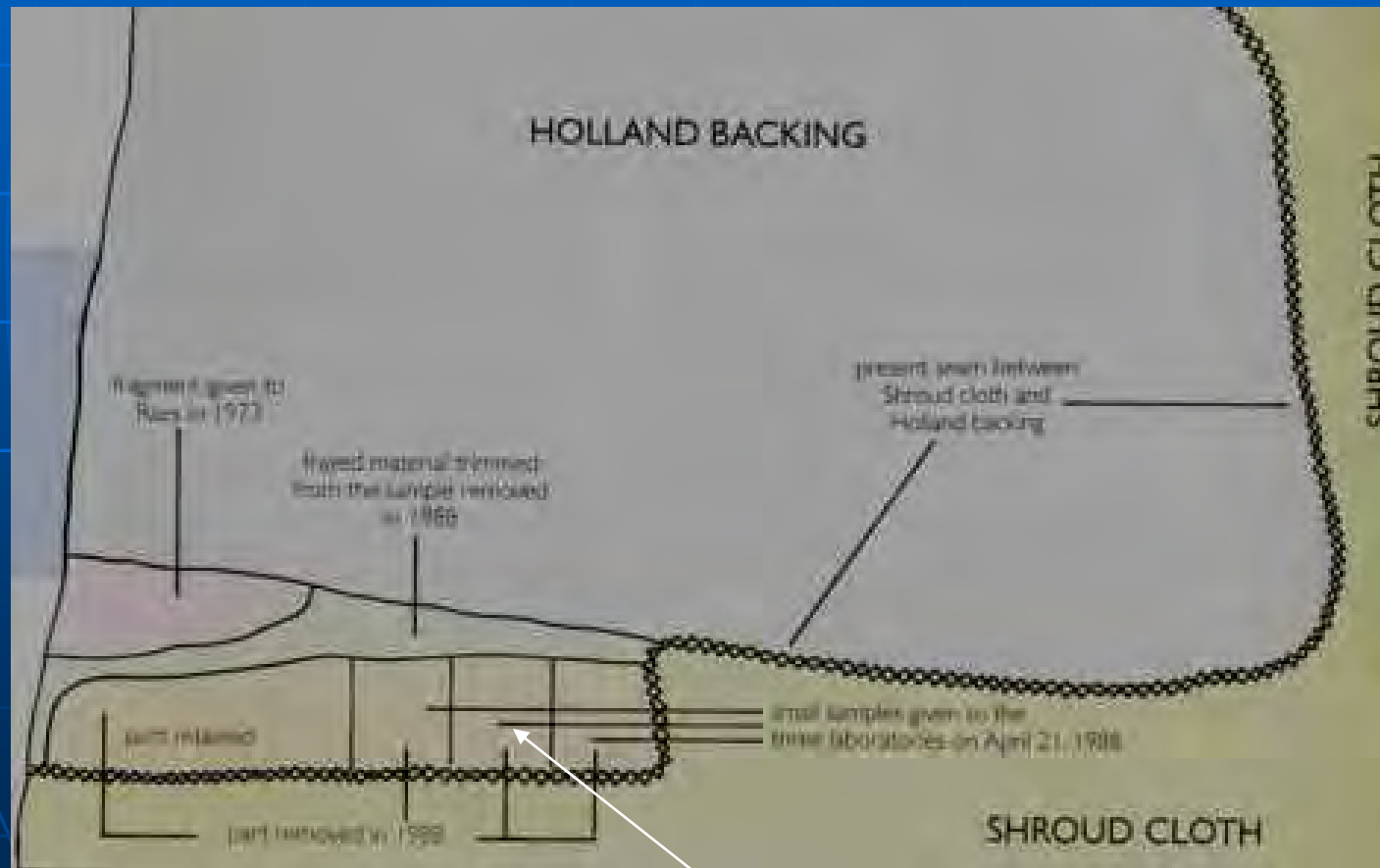
**Linen AGE CAN *NOT* BE DETERMINED BY CARBON DATING - ERROR OF 500-1000 YEARS**

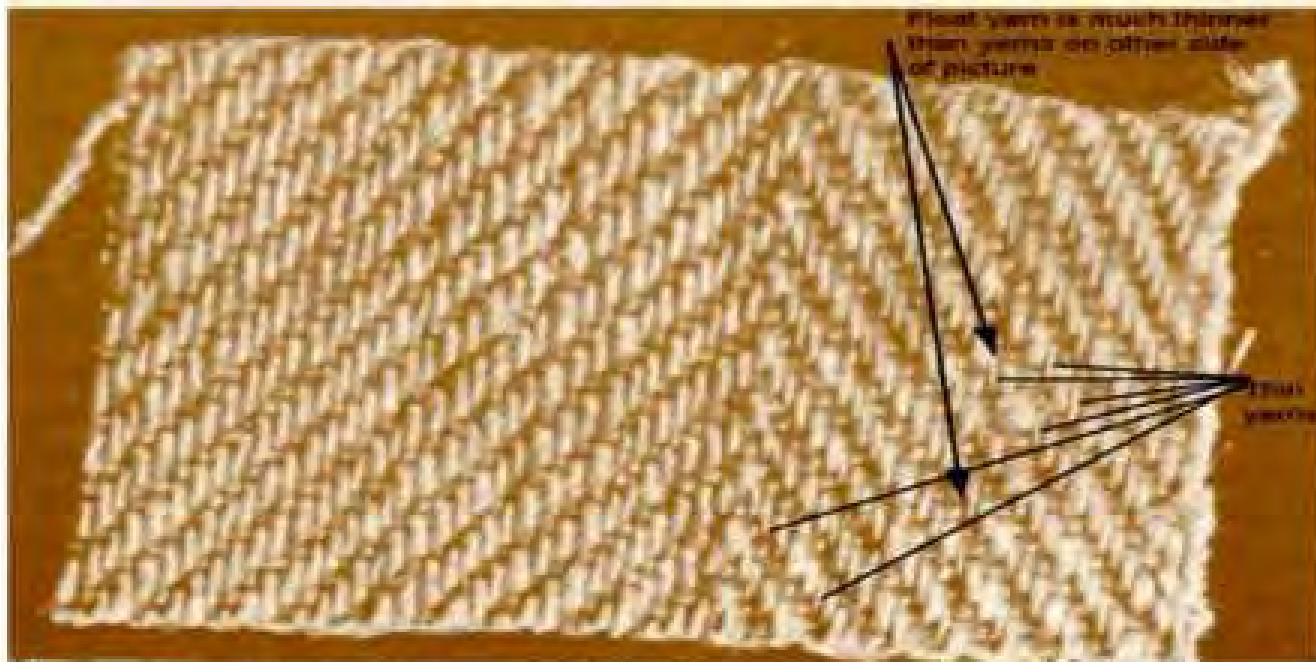
Raymond Rogers – 7/1927 – 5/2005



# Shroud of Turin C-14 Samples

- Ray Rogers Study of Region Taken
- From Shroud for Carbon Dating





Weave pattern inconsistencies noted in blinded review of the Zurich C-14 sample by Albany International Research Company.



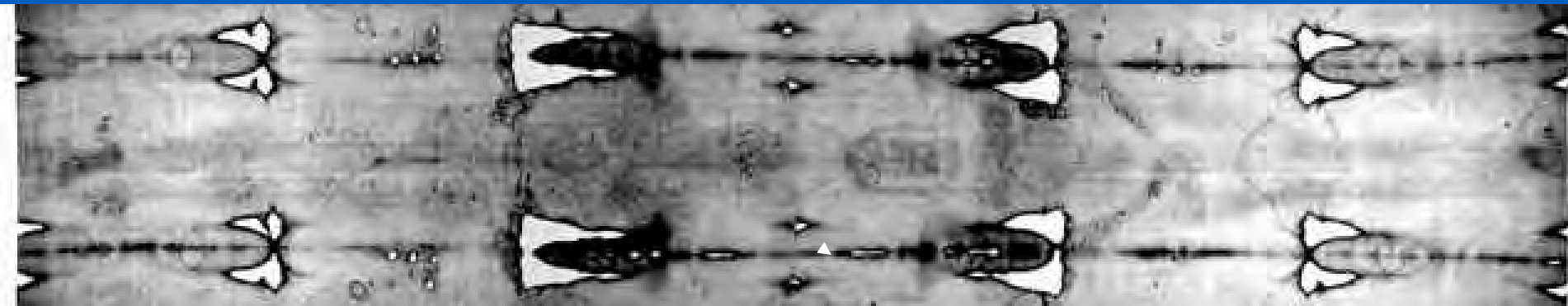
**Starched  
end of  
Darn**

**Darn splice used in 16<sup>th</sup> century - half covered  
with starch dates to 13<sup>th</sup> century AD, other  
end claimed to date ~3 century AD.**



# The Shroud after 2002 Restoration

What was seen at 2010 Exhibition



**Patches removed and Shroud burn holes sewed to white backing cloth. Treated it with Thymol resulting in unknown amount of contamination.**

# Shroud Image at the Bridge of the Nose

copyright 1978 Mark Evans



Figure 22: Dark Image at bridge of nose on the Shroud. © 1978 Mark Evans

# 8/30/2012 – Barrie Schwartz and his Macro Camera for photographing shroud sample left from carbon dating at University of Arizona Radiocarbon Dating Laboratory



**Back**



**Front (image side)**



**The weave is a 3 over 1 Herringbone Twill**

**Back**



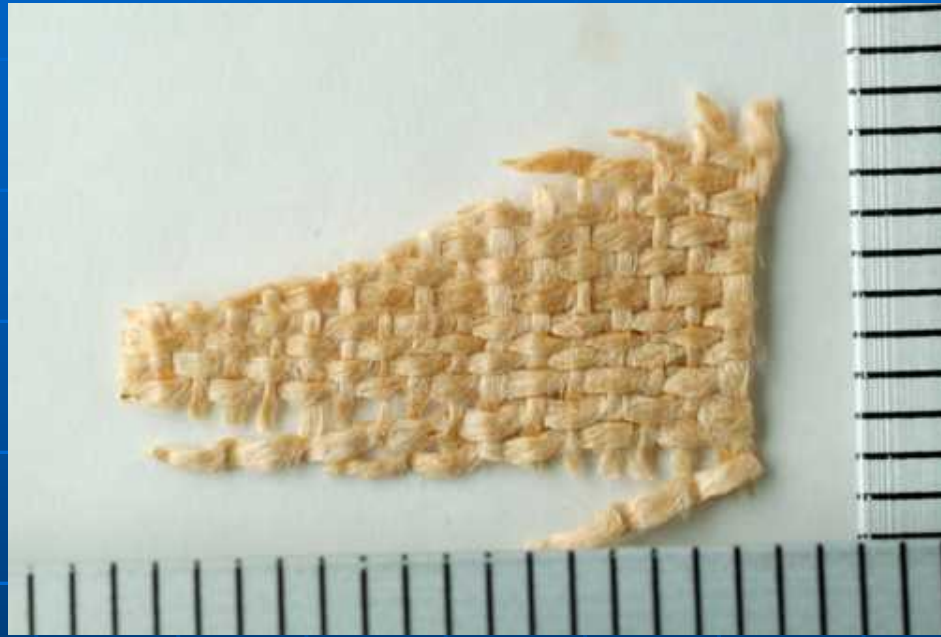
**Front (image side)**





**Reference  
Sample  
THREADS**

# Non Shroud Sample



**The weave is a 1 over 1 – Obvious which linen sample was not from Shroud**

- **Report available at**
- <http://www.shroud.com/pdfs/arizona.pdf>



# Egyptian Tomb Painting of Weaving



## Hungarian Pray manuscript – 1180-1195



**Shows Herringbone Weave and Burn Holes**  
**Burial Naked with No Thumbs**

# Evelyn Campbell at her Loom



**A natural colored line singles yarn  
approximately 350 micrometers thick**



A lea (4,800 yards) Purchased from Glimakra USA

# The Warp on the Loom







The woven linen cloth on the loom.





The woven linen cloth on the loom.







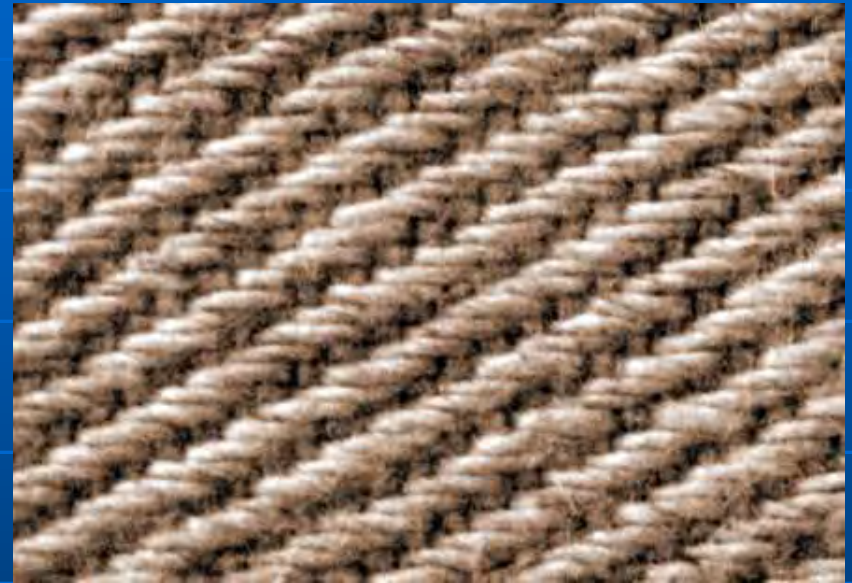
Back



Front – Shroud Image Side

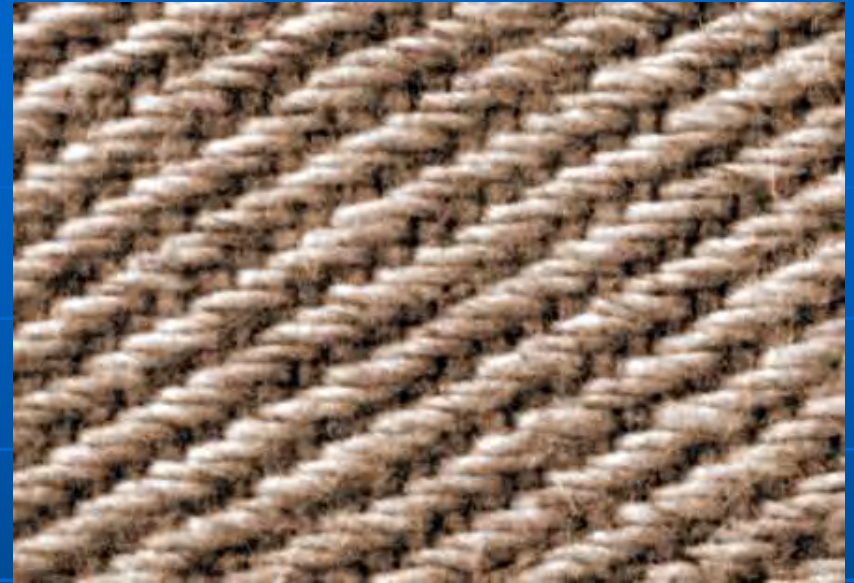
Back

Front



Back

Front







[www.shroud.com](http://www.shroud.com)

Mader Cloud Archive

<http://is.gd/4NnP1Z>

Shroud Directory